



The Building Regulations 2000 Access to and use of buildings



APPROVED DOCUMENT

Part M of the Building Regulations has made various recommendations that affect the construction of new buildings including alterations and extensions in the non-domestic market.

RPP has recognised these recommendations and developed products within the M2 Range that can meet the requirements:

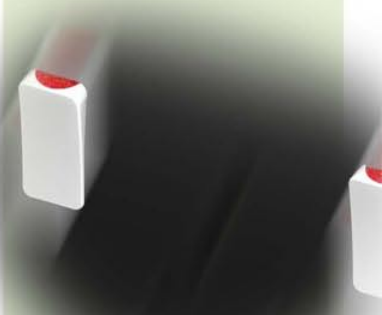


Accessories that 'Contrast Visually with their surroundings'

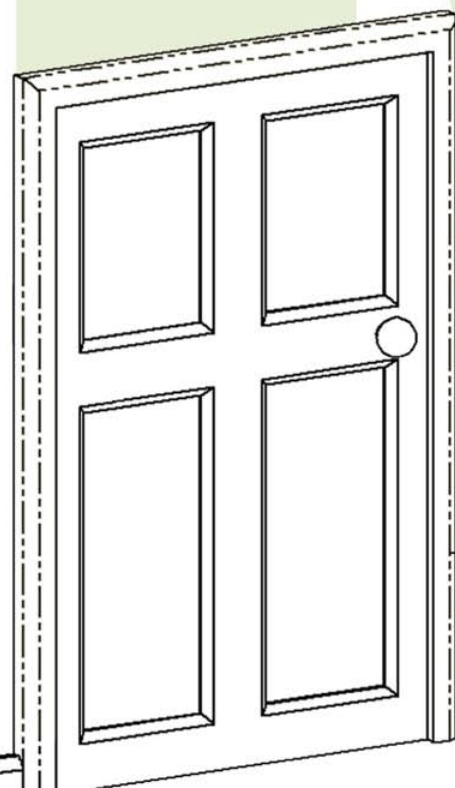


Individual switches on multiple Socket Outlets are well 'separated to avoid inadvertent selection' & indicate 'ON' status.

Switches activated by 'Large Switch Pads' & 'Simple push button controls that require limited dexterity' for visually impaired or infirm.



Light Switches to be aligned horizontally with door handles.



450mm
Minimum
1200mm
Maximum

Convert Low Level Sockets to regulation height using 'Height Converter unit'



All Accessories to be aligned within parameters shown.